

# Campsie Station

## Your transport options

Plan your trip at [transportnsw.info](https://transportnsw.info)  
Allow extra travel time

### Southwest transport changes

**M1**

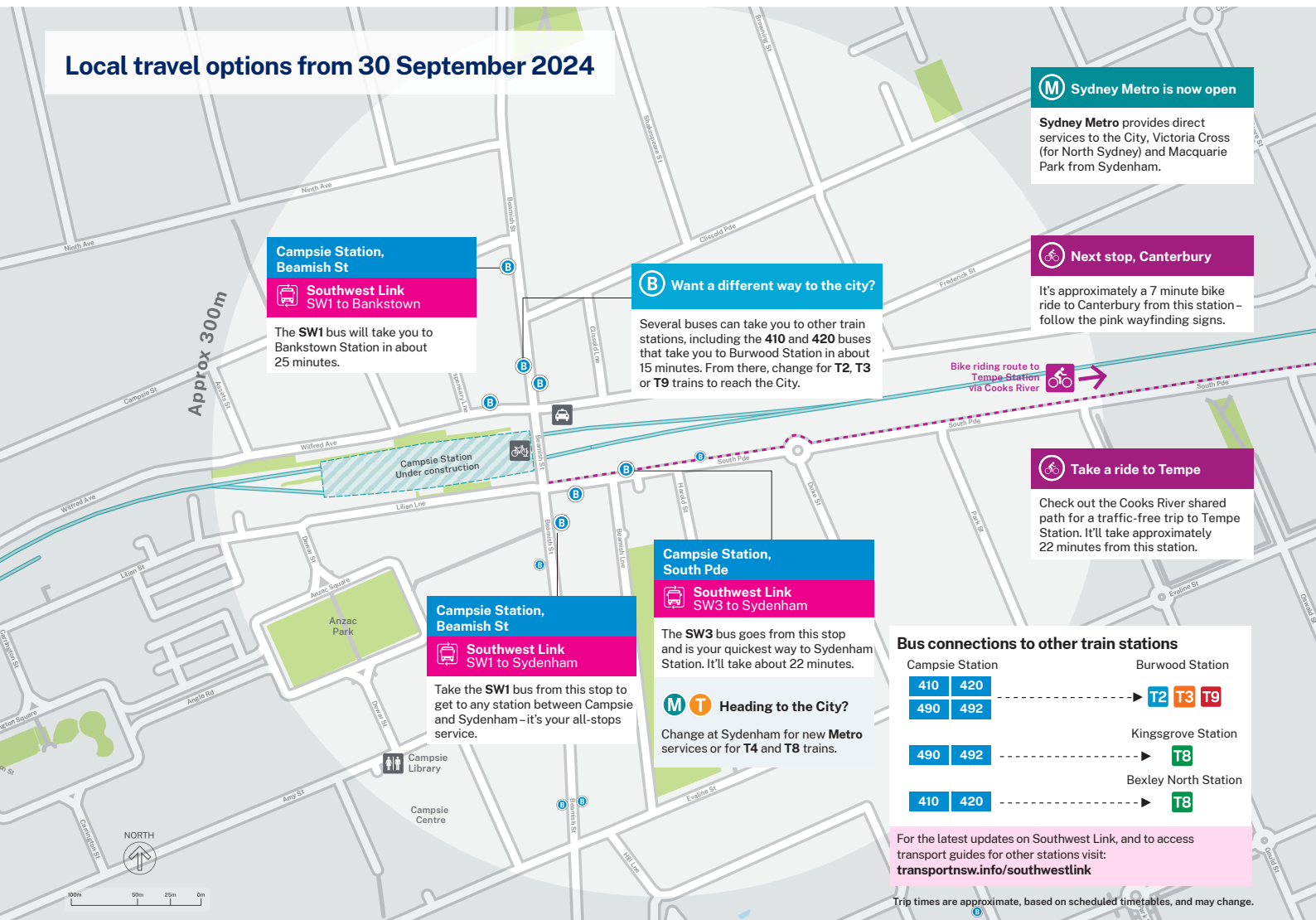
**M1 Metro between Chatswood and Sydenham now open**

**T3 T8 T6**

**From 30 September 2024, the T3 Bankstown Line is closed between Sydenham and Bankstown for metro conversion work.**

- Southwest Link buses provide a high-frequency bus service between Sydenham and Bankstown stations for 12 months.
- T3 Liverpool & Inner West train service introduced from Liverpool to the City, via Lidcombe.
- From 19 October 2024, the new T6 Line operates between Lidcombe and Bankstown.
- St Peters and Erskineville stations are serviced by the T8 Airport & South Line.

### Local travel options from 30 September 2024



### Southwest Link bus services and frequencies



- Every 2 to 4 minutes during peak periods
- At least every 10 minutes across most of the day
- At least every 15 minutes late at night
- Accessible low floor buses will be used across Southwest Link bus routes.
- Travel on Southwest Link buses is fare free.

### Discover more ways to walk or ride

We're introducing lots of ways to make your walking or riding experience easier during these transport changes.



Visit [transportnsw.info/southwest-link/active-transport](https://transportnsw.info/southwest-link/active-transport) to get bike route maps, tips for your trips, and sign up for free courses and local events.

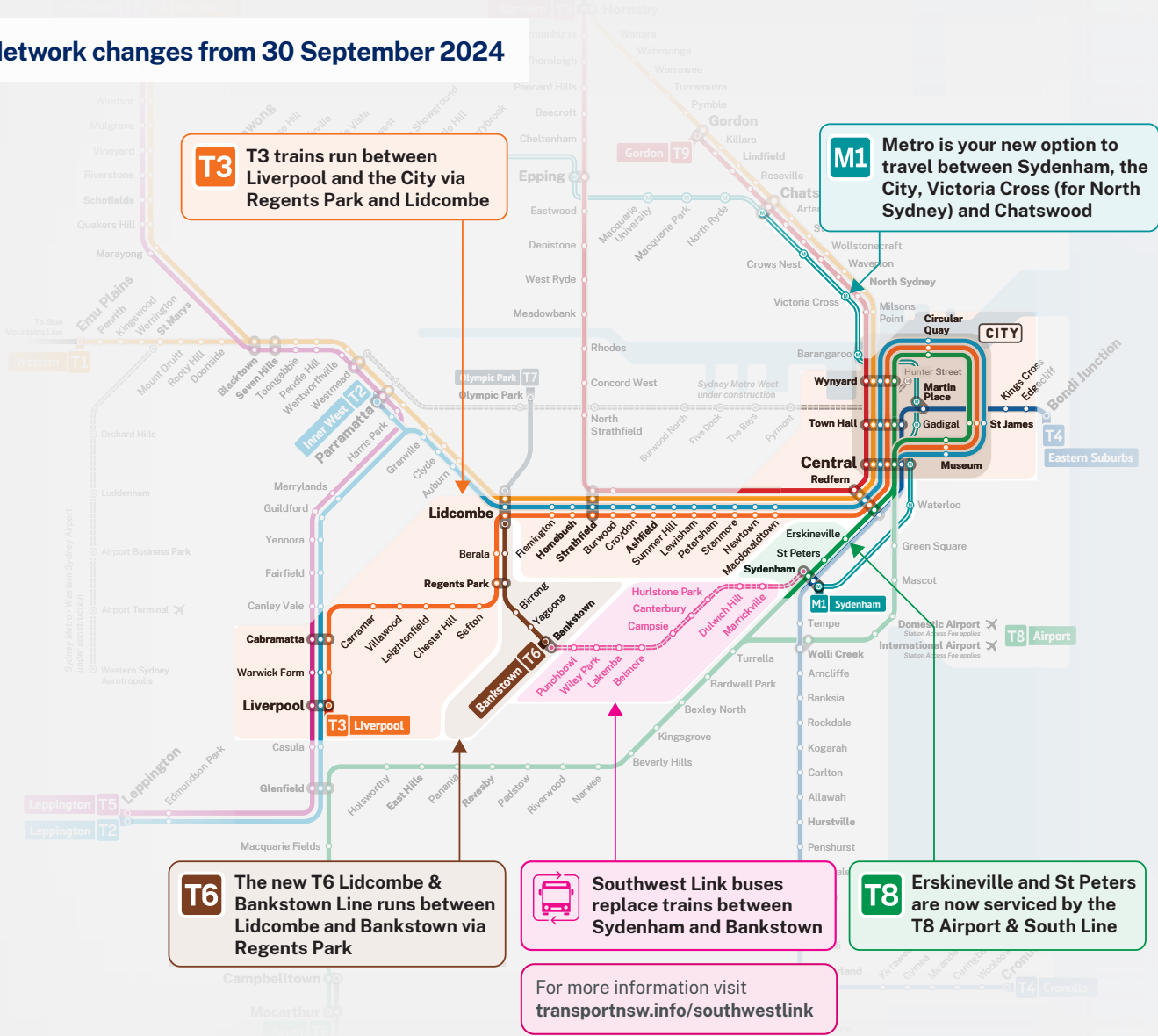


**Southwest Link**  
Making way for Sydney Metro

# Campsie Station

## Your transport options

### Network changes from 30 September 2024



## T6 T6 Lidcombe & Bankstown Line

From 19 October, the new T6 Line will run between Lidcombe and Bankstown, stopping at Berala, Regents Park, Birrong and Yagoona.

Regents Park is the main interchange for passengers travelling between Bankstown and Liverpool.

Lidcombe is the main interchange for passengers travelling between Bankstown and the City, Redfern or Parramatta.

Change at Bankstown for Southwest Link buses to stations between Sydenham and Bankstown.

Plan your trip at [transportnsw.info/trip](https://transportnsw.info/trip)  
Allow extra travel time

Use Trip Planner to search trip options, check timetables and travel alerts, and see your trip mapped out.



#### Translating and interpreting service

If you need help understanding this information, please contact the Translating and Interpreting Service (TIS) on 131 450 and ask them to call Transport for NSW on 131 500.

© Transport for NSW

The information in this brochure is intended as a guide only and is subject to change at any time without notice.



**Southwest Link**  
Making way for Sydney Metro